

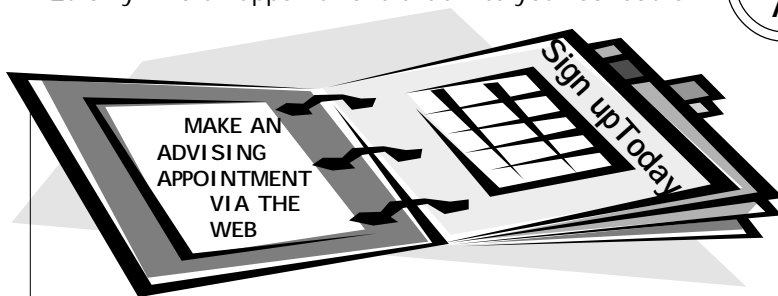
AdvisingMatters

October, 2005
Volume XI, Number 2Engineering Advising Center ♦ 1009 Lurie Engineering Center ♦ (734) 647-7106
www.engin.umich.edu/students/advising/

Engineering Advising Center
North Campus
1009 Lurie Engineering Center
Monday - Friday, 8:00am-5:00pm

Residence Halls Advising: Starts 10/10/05MoJo: Tuesday 1-4pm
Advising Office - Main FloorBaits I: Thursday 7-9:30pm
2104 ParkerBursley: Wednesday 7-9:30pm
Advising Office - Off Main LobbyMarkley: Wednesday 7-9:30pm
Advising Office - Main FloorSouth Quad: Monday 7-9:30pm
Advising Office in the ICR, 9th FloorWest Quad: Wednesday 7-9:30pm
Advising Office - Across from East Dining Rm.**NEWS
FLASH!****APPOINTMENT****Web Scheduling System!!!!**www.engin.umich.edu/students/advising/

Quickly find an appointment that fits your schedule.



Make your appointments early, review your academic year plan and get your questions answered by the experts.

EAC FACULTY ADVISORS

Prof. A. Waas - AERO
Dr. R. Schmedlen - BIOMEDICAL
Dr. S. Montgomery - CHEM
Prof. W. Hansen - CIVIL
Prof. P. Chen - CSE/CE
Prof. H. Winful - EE/CE
Prof. M. Epelman - IOE
Prof. C. Borgnakke - ME
Prof. R. Robertson - MSE
Prof. T. Perakis - NAME

STAFF ADVISORS

Mechy Barcia, Director • barciamg@umich.edu
Kurt Hill, Advisor • kchill@umich.edu
Ashley Ho Lee, Advisor • ashleey@umich.edu
Shawn Salata, Advisor • ssalata@umich.edu
Wanda Dobberstein, Advisor • wldobber@umich.edu

**MEET WITH AN EAC ADVISOR
BEFORE YOUR
REGISTRATION APPOINTMENT**Academic Advising is **Mandatory** for
All First-Year & Undeclared StudentsRegistration for Winter Term 2006 classes will begin **late November**. Before registering for classes all first-year and undeclared students are **required** to review their course selections with an EAC advisor. Beat the appointment rush by scheduling your appointment now.
www.engin.umich.edu/students/advising/**Inside this issue:**

- ♦ Drop/Add and Pass/Fail Deadlines
- ♦ CoE Peer Mentoring Program
- ♦ Engineering Career Resource Center
- ♦ Engineering Departments' Websites
- ♦ Frequently Asked Questions
- ♦ Study Tips and Academic Resources

A NOTE FROM KURT HILL

Academic Advisor

Now that you're all settled in and have been attending classes for about 3 weeks, it's time to really start preparing for the first round of exams coming up in early October.



Here are a few tips to help you earn your A's:

- If you are still confused on concepts, especially math, see your GSI /Prof now. Don't wait!
- Work all the problems in the chapters. If you get stuck, ask someone for help. Close the book and see how well you can work the problems.
- Find a quiet place to study. Consider a place outside of your residence hall room.
- Study effectively with study partners by discussing issues/concepts, comparing notes and coming up with possible test questions.
- Attend review sessions before your exams.

CoE Peer Mentoring Program Update

<http://www.engin.umich.edu/students/advising/mentoring/>

The Kick-Off Event was a success! Over 100 students joined us for our first event of the year. It was a tight squeeze in the room, but the good food and mingling with new friends kept everyone happy!

Join us for our next event tentatively planned for

Tuesday, October 18th!

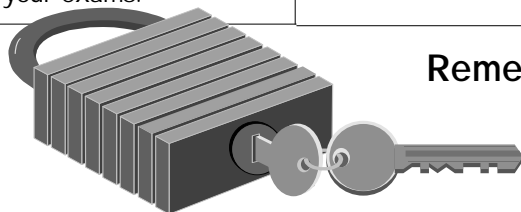
7-9pm Location TBA

Drop by for a **Study Break** and some **Caffeine and Sugar!**

If you signed up for the Peer Mentoring Program, please keep checking your email and Ctools for future events and resources! More information can also be found on our website, or by emailing your mentor and coementoring@umich.edu.

*It's not too late if you still want to sign up for a mentor; just fill out our online application!

****Start preparing for your upcoming exams now!****



Remember:

The key to success is using available resources

ACADEMIC RESOURCES:

Instructor Office Hours

Your Graduate Student Instructors (GSI's) and professors have scheduled office hours. Go see your instructors and partner with them to get the most out of the course. If you cannot make it to scheduled office hours talk to your instructor before or after class, or email them for another time to meet.

The Engineering Learning Resource Center (ELRC)

G264 LEC, 647-7127

The ELRC provides FREE tutoring, mock exams and facilitated study groups for Math, Chemistry, Physics, and Engineering 101.

Tau Beta Pi, Engineering Honor Society, 615-4187

<http://www.engin.umich.edu/soc/tbp/tutor>

The honor society provides FREE tutoring for 100 and 200 level Math, Physics, Chemistry and Engineering courses.

Math Lab, B860 East Hall, 936-0160

The Math Lab offers FREE tutoring assistance for 100 & 200 level math courses. Contact the lab for hours of operation.

Physics Help Room, 1416 Randall Lab

FREE tutoring for introductory physics courses.

Science Learning Center (SCL), 1720 Chemistry Bldg.

764-9326 FREE Chemistry, Biology and Physics tutoring. Schedule is posted outside of the Center and listed on their website: www.lsa.umich.edu/slc

◆ Study Tips

- See your GSI's and Professors early and be prepared to ask lots of questions.
- Do not procrastinate. Don't fall behind on your work!
- Location, location, location...find a place that is relatively free of distractions, including cell phones, instant messenger, television, video games, etc.
- Find at least one or two students in each class to study with.
- Join study groups.
- Break large or overwhelming tasks into smaller, more manageable steps.
- Make use of academic resources on campus.
- Reward yourself for completing tasks. Note what you have accomplished, even if an entire project is not complete.

◆ Balance Your Life

- Build some time for fun and relaxation into your schedule.
- Get energized - Eat, Exercise, Sleep.
- Get involved! Join an organization, I M sports, community service, etc.
- Watch out for credit card debt.
- MAINTAIN A POSITIVE ATTITUDE, be a good listener, stick to your own convictions, and strive for your dreams!

Frequently Asked Questions:

Q: What should I do if I have a time conflict between an exam and another class time?

A: You need to contact your instructor ASAP to see if there is an alternate exam day or special arrangements that can be made.

Q: Can I take an engineering, math or science class pass/fail?

A: No, you can only take humanities, social science or free electives pass/fail.

Q: Does the College of Engineering have the same pass/fail deadline as LSA?

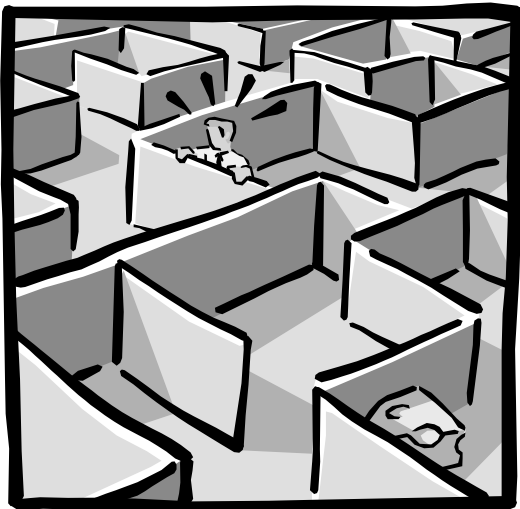
A: No, the pass/fail deadline for the College of Engineering is November 11, 2005.

Q: What does a "W" mean on my transcript?

A: A 'W' on your transcript means that you withdrew from class between the 3rd and 9th week of a full term. A "W" does not affect your semester GPA and is better than a failing grade.

Q: I am confused regarding my career path, and I am questioning whether I should stay in engineering. Who should I speak with?

A: You should make an appointment with an EAC advisor to discuss your concerns. Visit the EAC website: www.engin.umich.edu/students/advising/ to make an appointment.



Learn how to navigate the system

Engineering Departments' Web Sites

AERO	http://www.engin.umich.edu/dept/aero
AOSS	http://aoss.engin.umich.edu
BME	http://www.bme.umich.edu
CHEME	http://www.engin.umich.edu/dept/cheme
CIVIL	http://www.engin.umich.edu/dept/cee
CE	http://www.eecs.umich.edu
CSE	http://www.eecs.umich.edu
EE	http://www.eecs.umich.edu
EPHYS	http://www-ners.engin.umich.edu/academics/engphys
IDP	http://www.personal.engin.umich.edu/~schultz/IDP/
IOE	http://ioe.engin.umich.edu
MSE	http://msewww.engin.umich.edu
ME	http://me.engin.umich.edu
NAME	http://www.engin.umich.edu/dept/name
NERS	http://www.engin.umich.edu/dept/nuclear

ENGINEERING CAREER RESOURCE CENTER (ECRC)

230 CHRYSLER BLDG. 647-7160

(Between the Duderstadt Center and Pierpont Commons)

It's never too early to explore the possibilities!

Job search, industry, labor market, and career guidance information are available in the CoE Career Center. The *Engineering Career Resource Center (ECRC)* is here to make that task easier and more effective. We provide a variety of career planning programs and services.

A "Virtual" Career Center - <http://career.engin.umich.edu/>

Check here for valuable career information on topics such as job search techniques, companies that hire UM students and graduates, and on-campus recruiting. You can also find out more about ECRC's **EnginTrak** service.

EnginTrak is an online student access tool. Establish a private **EnginTrak** account by registering online and uploading your resume(s) and cover letter. Then you will be able to use **EnginTrak** to:



- √ Access current online job postings
- √ Submit your resume to visiting companies
- √ Sign up for interviews
- √ Track your activity
- √ Access the online Career Guide
- √ Contact employers



**University of Michigan
College of Engineering**

Engineering Advising Center
1009 Lurie Engineering Center
1221 Beal Avenue
Ann Arbor, Michigan 48109-2102

The Regents of the University of Michigan:

David A. Brandon, Ann Arbor
Laurence B. Deitch, Bingham Farms
Olivia P. Maynard, Goodrich
Rebecca McGowan, Ann Arbor
Andrea Fischer Newman, Ann Arbor
Andrew C. Richner, Grosse Pointe Park
S. Martin Taylor, Grosse Pointe Farms
Katherine E. White, Ann Arbor
Mary Sue Coleman, ex officio

**DROP/ADD and PASS/FAIL
DEADLINES
Fall 2005 TERM**



**DROPPING A COURSE
AFTER NOVEMBER 11th**

Dropping or adding a class should be done as soon as possible for the maximum benefit and minimum hassle.

September 7 - September 26

Students can DROP /ADD courses, and modify a course to P/F using **Wolverine Access**.

September 27 - November 11

Students can DROP (with a **W**) /ADD courses, and modify a course to P/F only.

1. Obtain a DROP/ADD form from the **Engineering Advising Center (EAC)** at 1009 LEC .
2. Fill out the DROP/ADD or modifier sections (P/F).
- 3a. **Drop/Add** Have the form **signed** by the **course instructor** and an **EAC advisor**.
- 3b. **Pass/Fail** You will need an **EAC advisor** signature.
4. Submit the signed DROP/ADD form to the Engineering Records Office, 1401 LEC.

Engineering Advising Center Staff

Mercedes G. Barcia, Director, barciamg@umich.edu
Kurt C. Hill, Advisor, kchill@umich.edu
Ashley Ho Lee, Advisor, ashleey@umich.edu
Shawn Salata, Advisor, ssalata@umich.edu
Andy LeMarbe, Student Serv. Assis., alemarbe@umich.edu

Students **must petition** to DROP/ADD a course after **Friday, November 11, 2005**

**COLLEGE OF ENGINEERING
PETITION FOR REQUEST FOR LATE DROP**
www.engin.umich.edu/students/support/slas/SSC/petitions

The Drop/Add form must include:

- ✓ **Documentation** of extenuating circumstances.
- ✓ **Signature** of the course instructor.
- ✓ **Signature** of your EAC or department advisor.

The petition must be turned in to the Scholastic Standing Committee (SSC) administrator in 1420 LEC.

◆ **All petitioned Drops will be reviewed and either approved or not approved by the Scholastic Standing Committee.**

The only approved drops will be for those students who present written evidence of extenuating circumstances.

Note: Poor performance does not constitute an extenuating circumstance.

(Refer to page 48 in '05-'06 College of Engineering Bulletin)

First Year Programs' Staff

Wanda Dobberstein, First Year Programs, wldobber@umich.edu