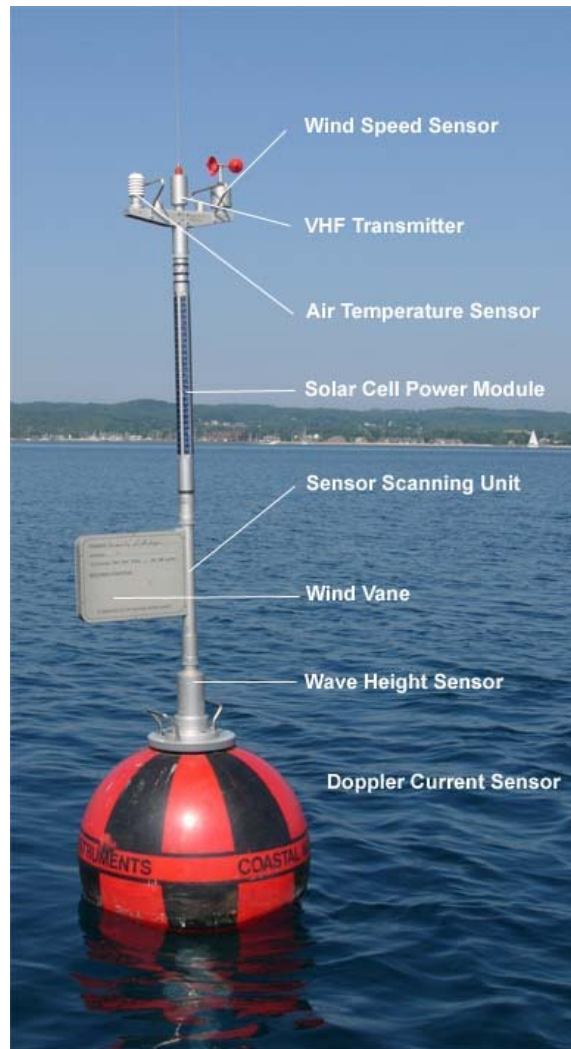


# Traverse Bay Environmental Monitoring Buoy 2005



# Traverse Bay Environmental Monitoring Buoy 2005

## July-November 2005

Measurement	Average	Maximum	Date of Maximum
Wind (mph)	9.7	31.1	9-13-2005
Gust Wind (mph)	13.3	46.6	9-13-2005
Wave Height (ft)	.67	6.1	11-9-2005
Wave Period (s)	1.6	6.2	10-28-2005
Current Speed (ft/s)	.13	.58	9-22-2005

Measurement	Maximum	Date of Maximum	Minimum	Date of Minimum
Water Temperature (°F)	74.5	8-1-2005	50.0	11-9-2005
Air Temperature (°F)	88.6	8-2-2005	34.5	10-28-2005

## July 2005

Measurement	Average	Maximum	Date of Maximum
Wind (mph)	9.9	19.8	7-31-2005
Gust Wind (mph)	13.3	25.6	7-28-2005
Wave Height (ft)	1.2	4.7	7-30-2005
Wave Period (s)	.85	3.4	7-29-2005
Current Speed (ft/s)	.11	.42	7-30-2005

Measurement	Maximum	Date of Maximum	Minimum	Date of Minimum
Water Temperature (°F)	73.6	7-30-2005	71.2	7-30-2005

## Traverse Bay Environmental Monitoring Buoy 2005

Air Temperature (°F)	83.5	7-31-2005	56.9	7-30-2005
----------------------------	------	-----------	------	-----------

### August 2005

Measurement	Average	Maximum	Date of Maximum
Wind (mph)	8.2	27.8	8-4-2005
Gust Wind (mph)	11.2	36.9	8-4-2005
Wave Height (ft)	.60	3.5	8-26-2005
Wave Period (s)	1.6	5.5	8-5-2005
Current Speed (ft/s)	.13	.45	8-15-2005

Measurement	Maximum	Date of Maximum	Minimum	Date of Minimum
Water Temperature (°F)	74.5	8-1-2005	66.1	8-4-2005
Air Temperature (°F)	88.6	8-2-2005	56.1	8-24-2005

### September 2005

Measurement	Average	Maximum	Date of Maximum
Wind (mph)	9.9	31.1	9-13-2005
Gust Wind (mph)	13.6	46.6	9-13-2005
Wave Height (ft)	.51	3.2	9-29-2005
Wave Period (s)	1.5	2.6	9-29-2005
Current Speed (ft/s)	.14	.58	9-22-2005

Measurement	Maximum	Date of Maximum	Minimum	Date of Minimum
Water	71.4	9-9-2005	63.1	9-30-2005

## Traverse Bay Environmental Monitoring Buoy 2005

Temperature (°F)				
Air Temperature (°F)	83.2	9-11-2005	49.6	9-24-2005

### October 2005

Measurement	Average	Maximum	Date of Maximum
Wind (mph)	10.5	29.9	10-19-2005
Gust Wind (mph)	14.5	40.3	10-19-2005
Wave Height (ft)	.72	4.9	10-19-2005
Wave Period (s)	1.8	6.2	10-28-2005
Current Speed (ft/s)	.13	.48	10-28-2005

Measurement	Maximum	Date of Maximum	Minimum	Date of Minimum
Water Temperature (°F)	63.1	10-1-2005	51.8	10-31-2005
Air Temperature (°F)	80.5	10-3-2005	34.5	10-28-2005

### November 2005

Measurement	Average	Maximum	Date of Maximum
Wind (mph)	11.4	30.8	11-9-2005
Gust Wind (mph)	16.3	46.6	11-9-2005
Wave Height (ft)	1.0	6.1	11-9-2005
Wave Period (s)	1.7	3.7	11-9-2005
Current Speed (ft/s)	.15	.45	11-3-2005

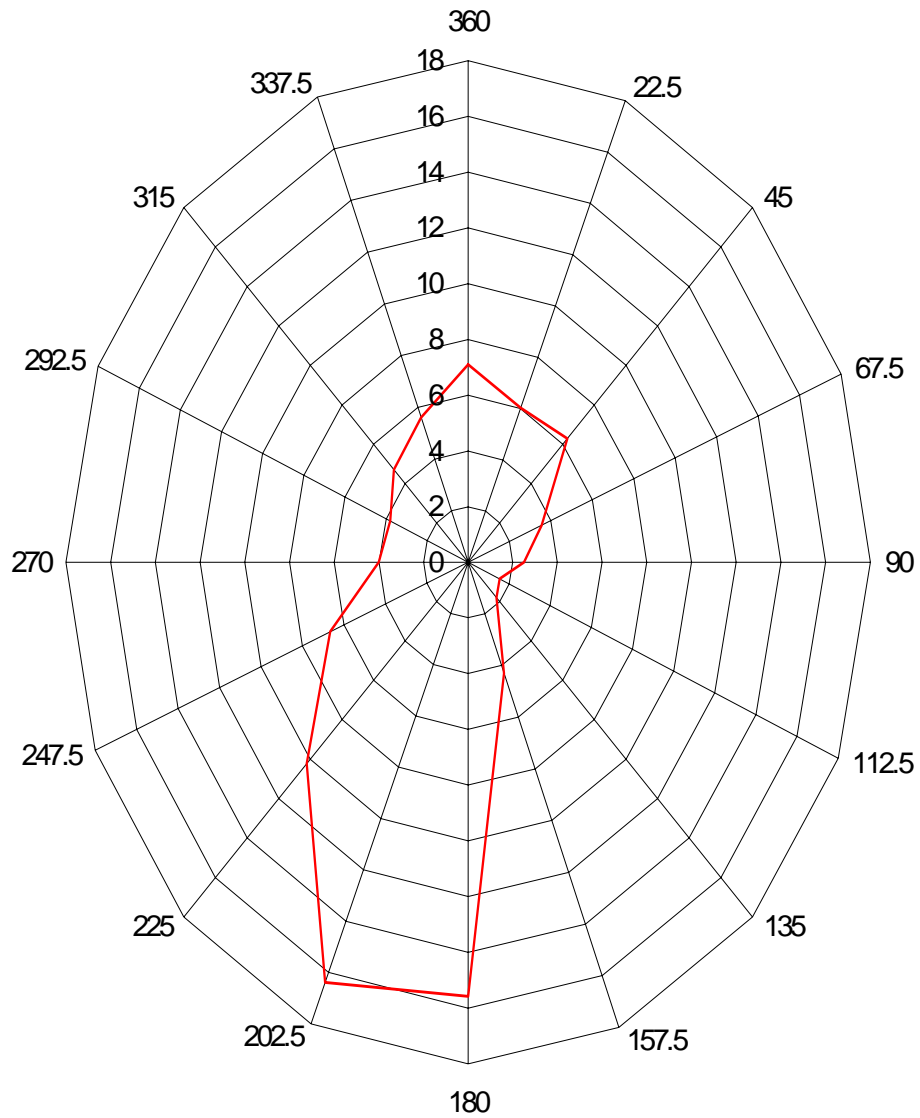
Measurement	Maximum	Date of	Minimum	Date of
-------------	---------	---------	---------	---------

## Traverse Bay Environmental Monitoring Buoy 2005

		<b>Maximum</b>		<b>Minimum</b>
Water Temperature (°F)	52.9	11-8-2005	50.0	11-9-2005
Air Temperature (°F)	61.0	11-3-2005	37.3	11-8-2005

# Traverse Bay Environmental Monitoring Buoy 2005

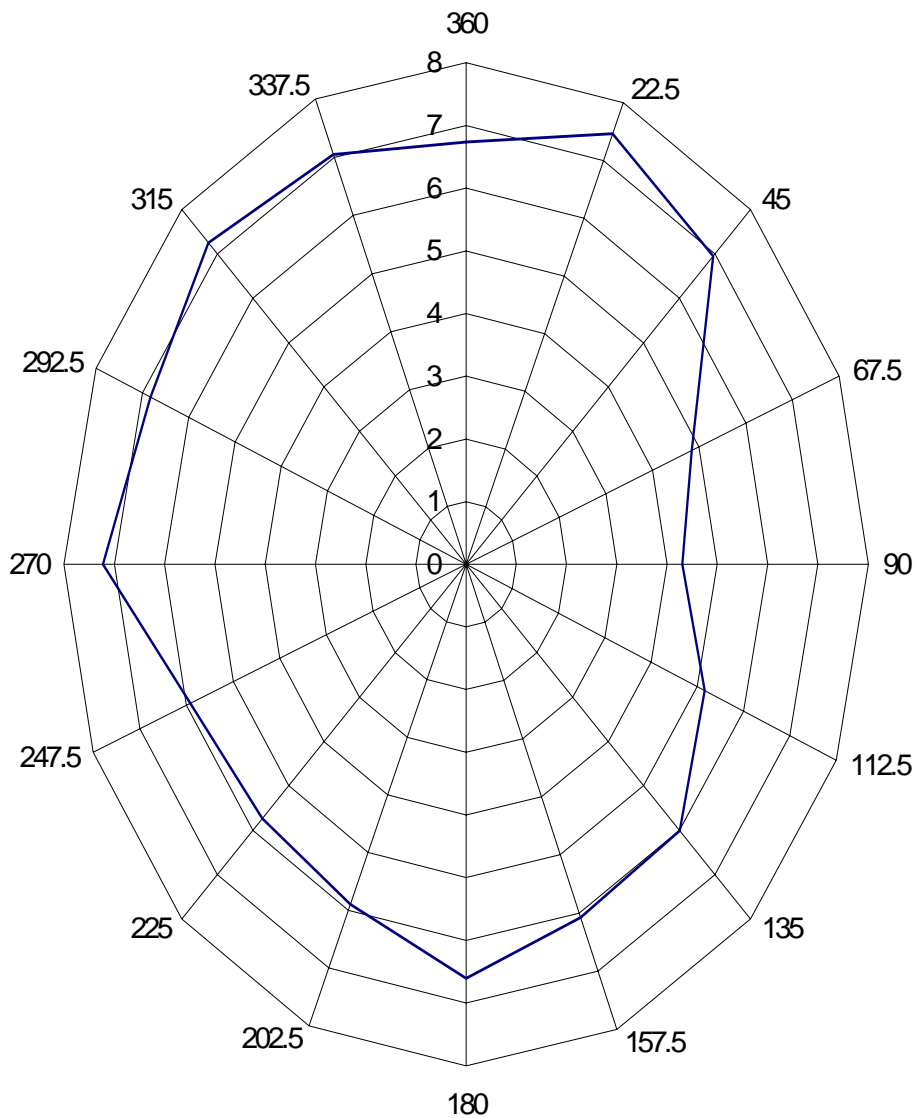
## Percentage Wind Direction July-November 2005



Direction implies the direction from which the wind originated.

# Traverse Bay Environmental Monitoring Buoy 2005

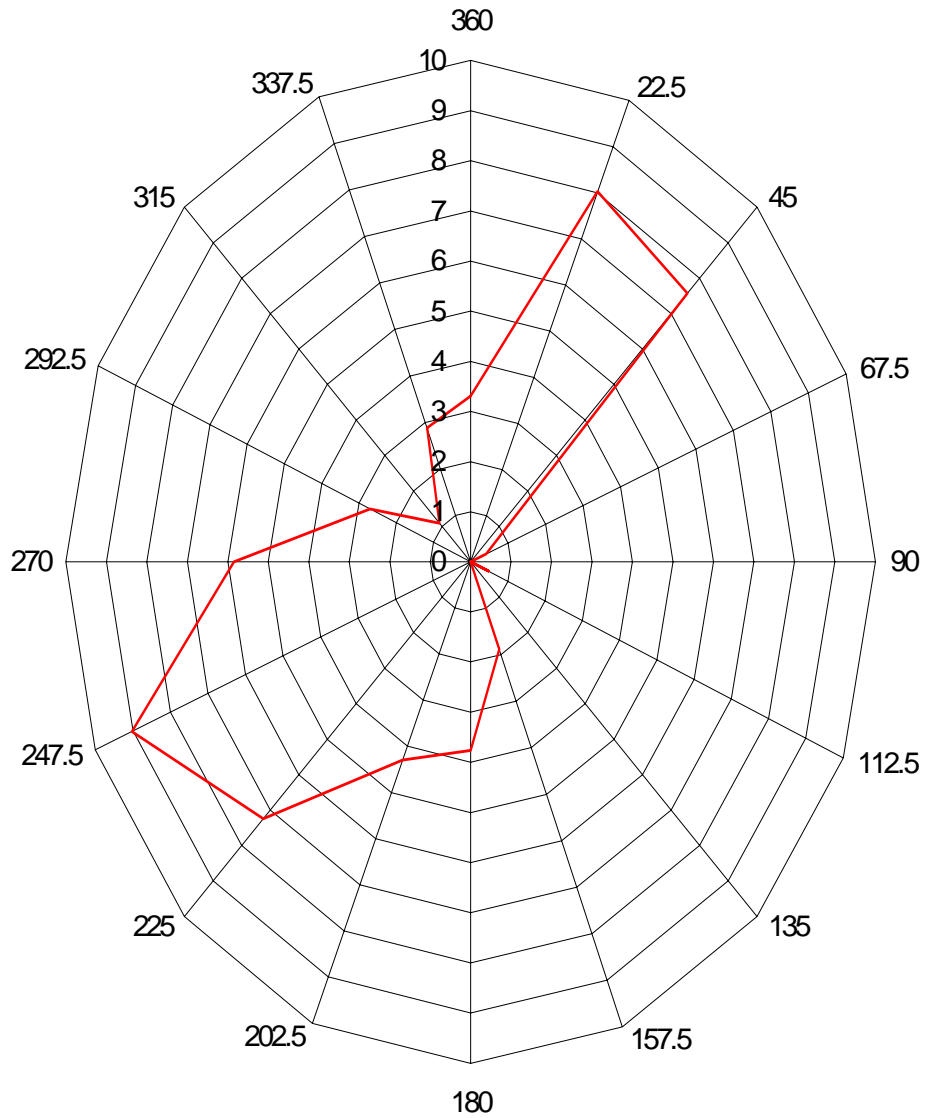
## Percentage Current Direction July-November 2005



Direction implies the direction in which the current was traveling.

# Traverse Bay Environmental Monitoring Buoy 2005

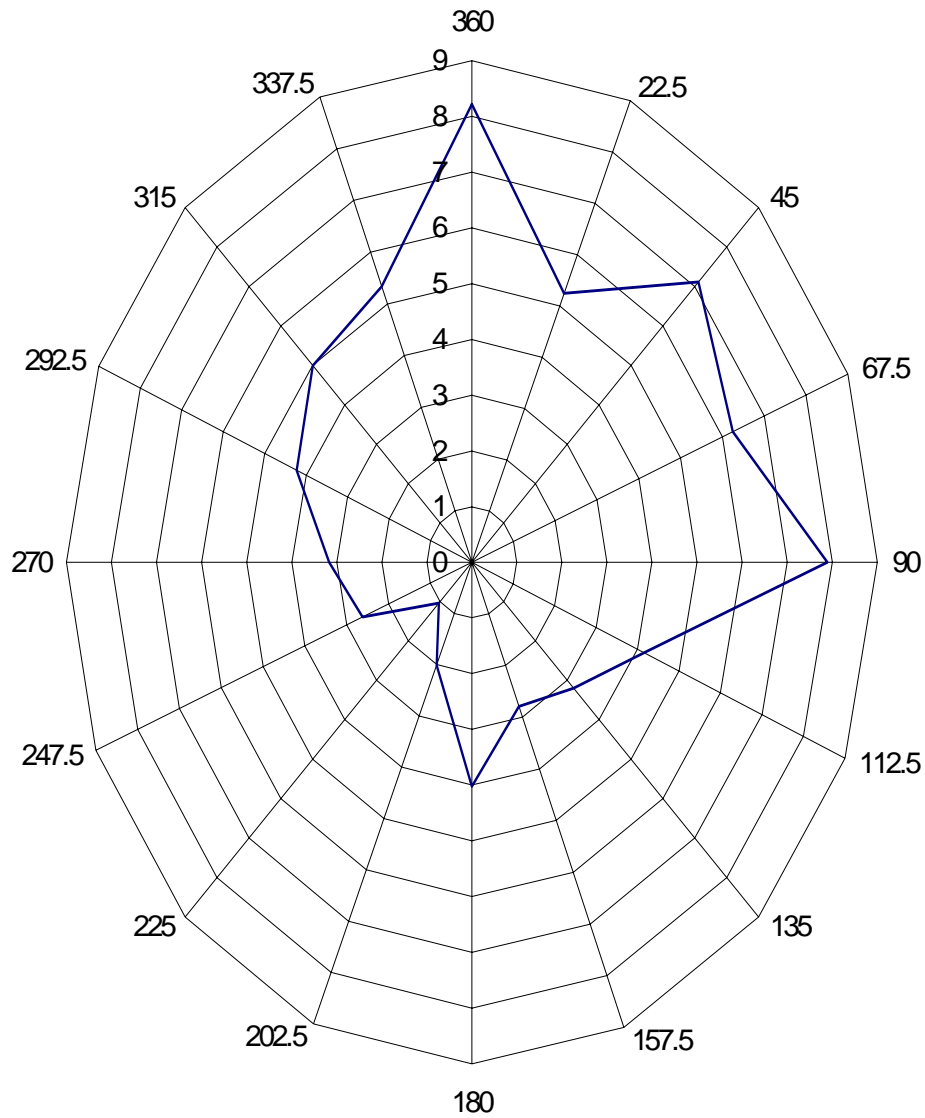
## Percentage Wind Direction July 2005



Direction implies the direction from which the wind originated.

# Traverse Bay Environmental Monitoring Buoy 2005

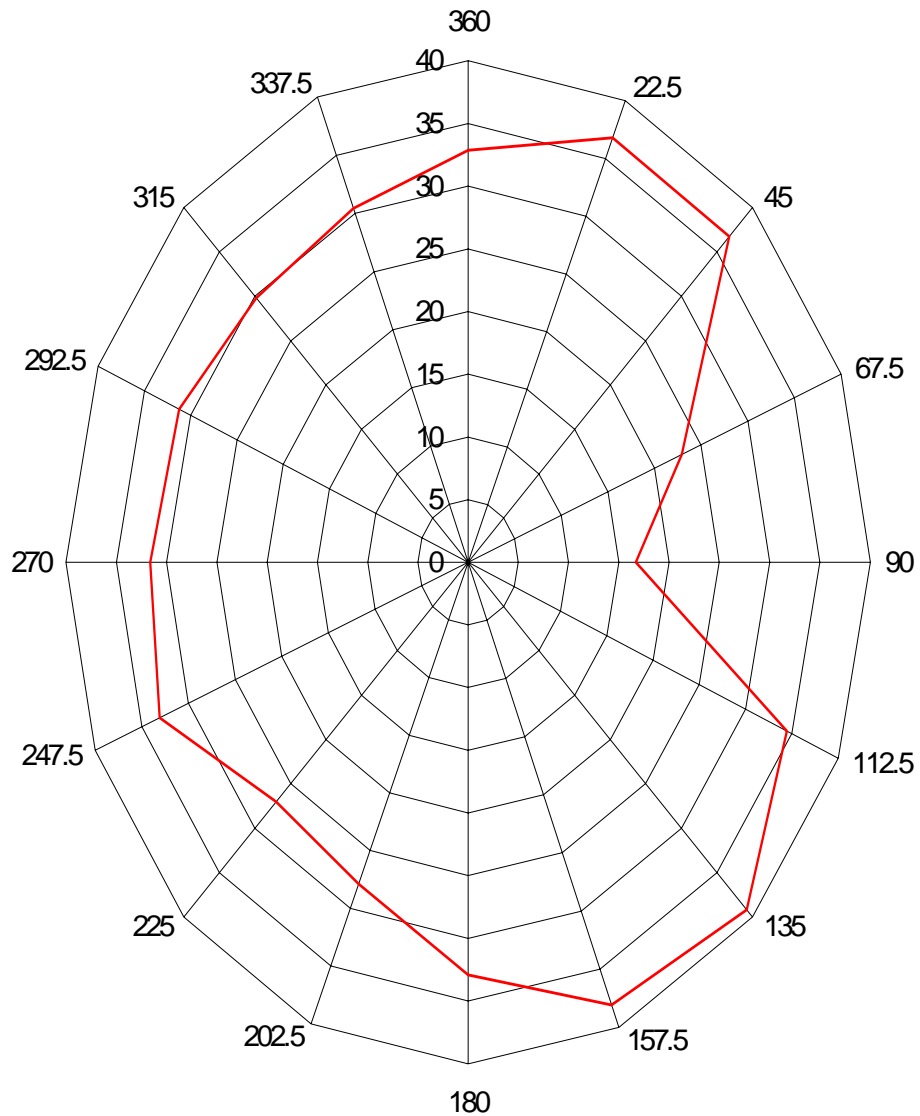
## Percentage Current Direction July 2005



Direction implies the direction in which the current was traveling.

# Traverse Bay Environmental Monitoring Buoy 2005

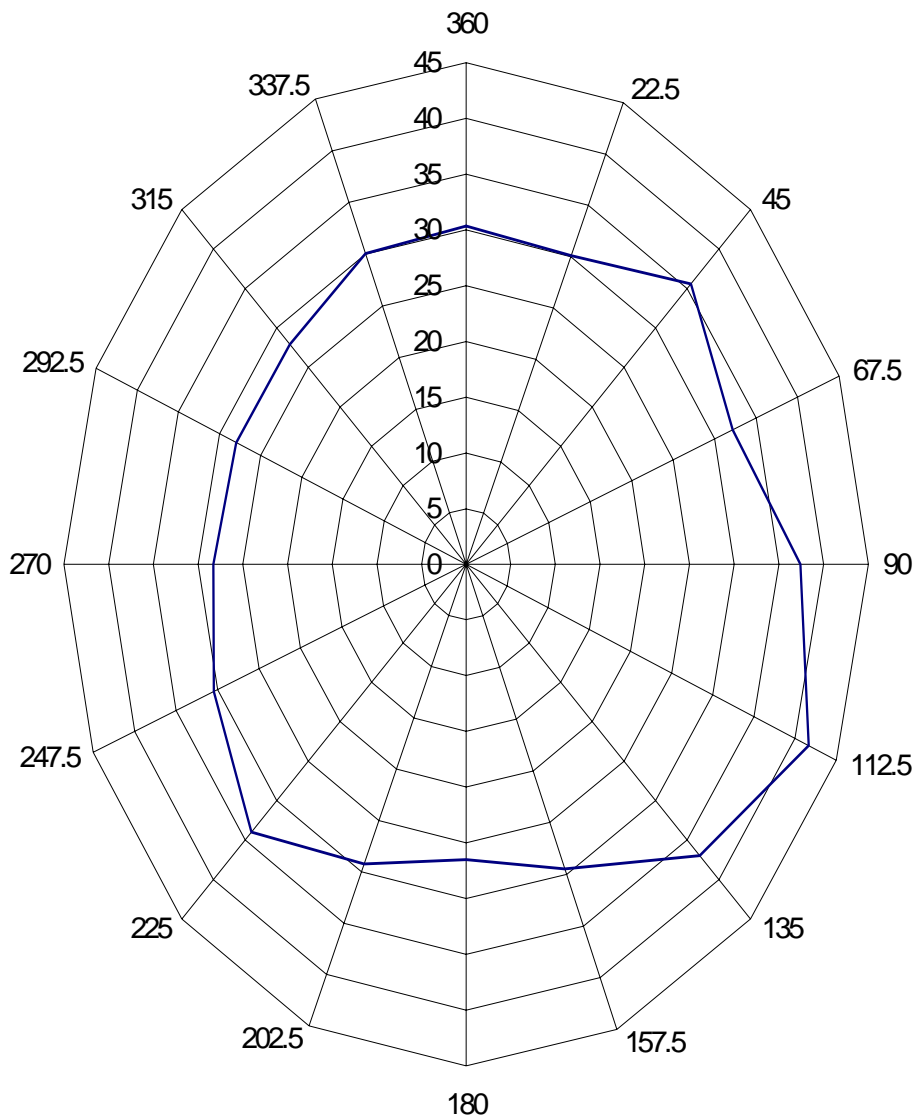
## Percentage Wind Direction August 2005



Direction implies the direction from which the wind originated.

# Traverse Bay Environmental Monitoring Buoy 2005

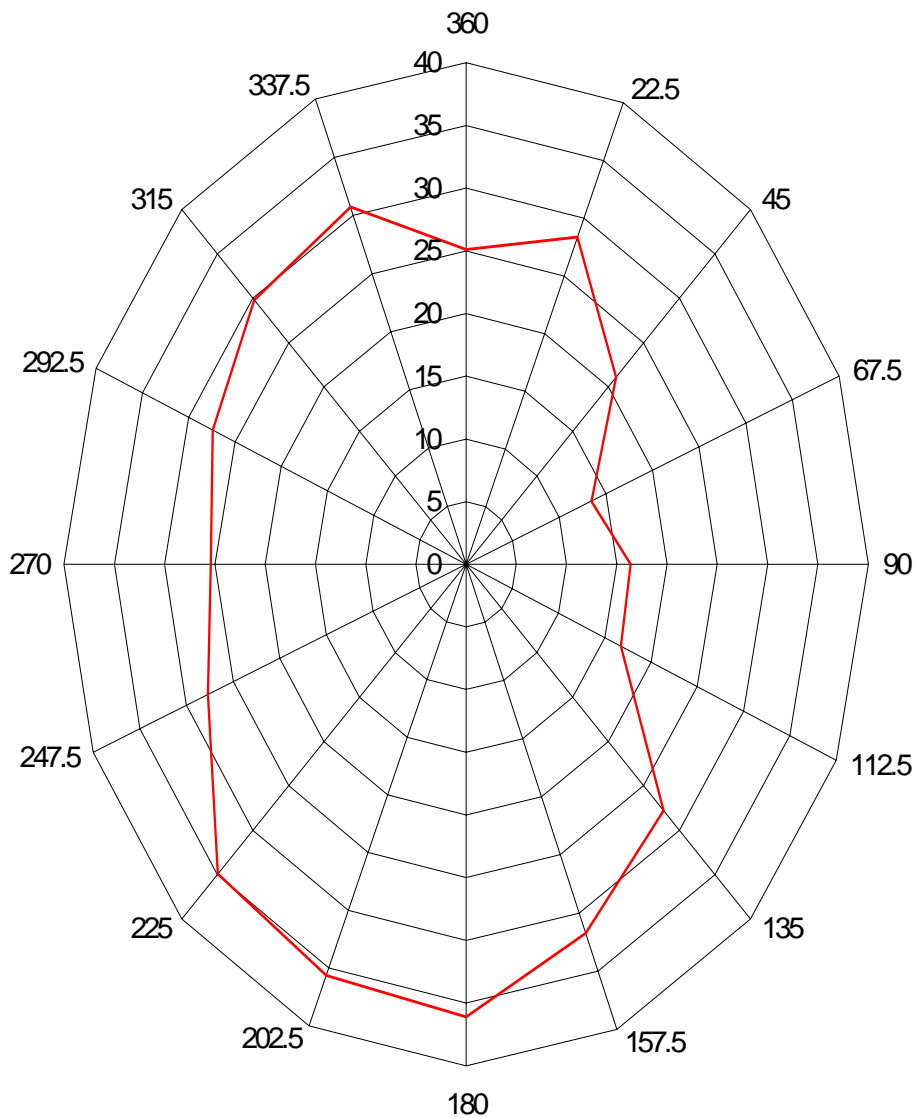
## Percentage Current Direction August 2005



Direction implies the direction in which the current was traveling.

# Traverse Bay Environmental Monitoring Buoy 2005

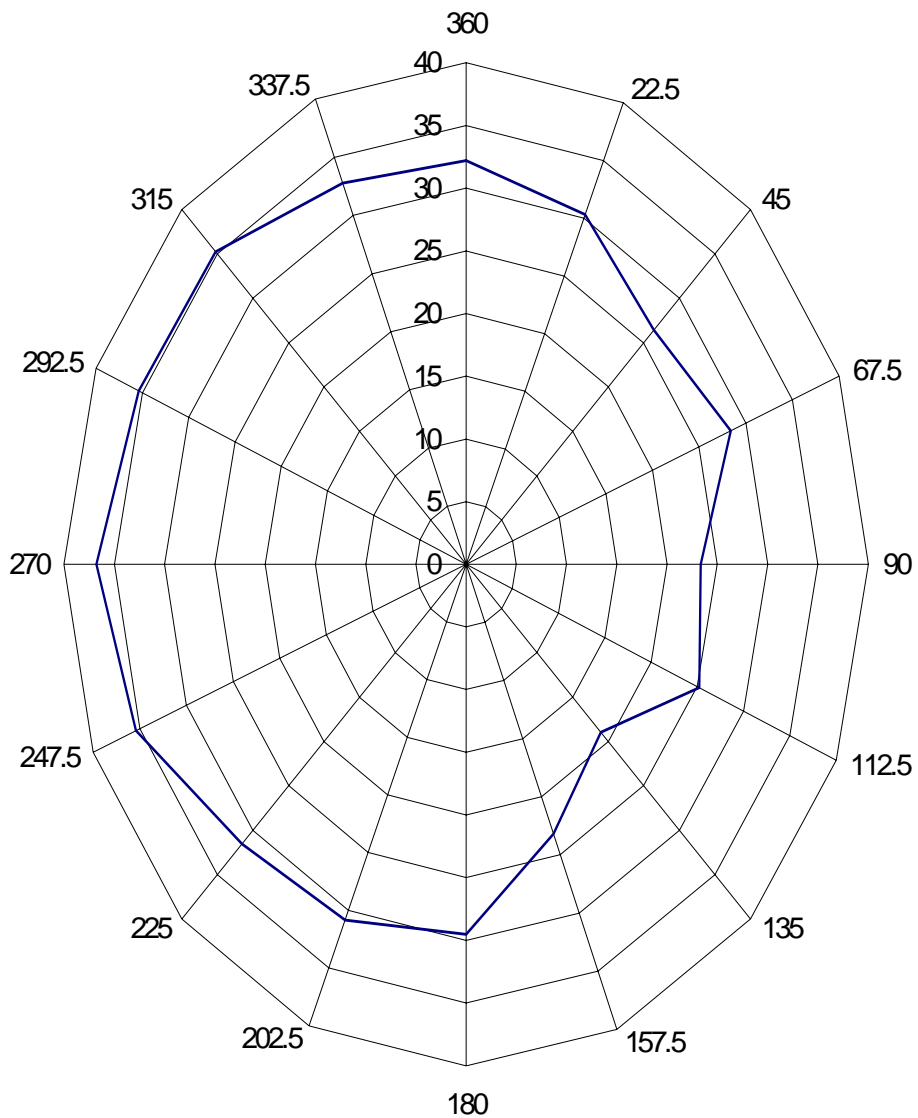
## Percentage Wind Direction September 2005



Direction implies the direction from which the wind originated.

# Traverse Bay Environmental Monitoring Buoy 2005

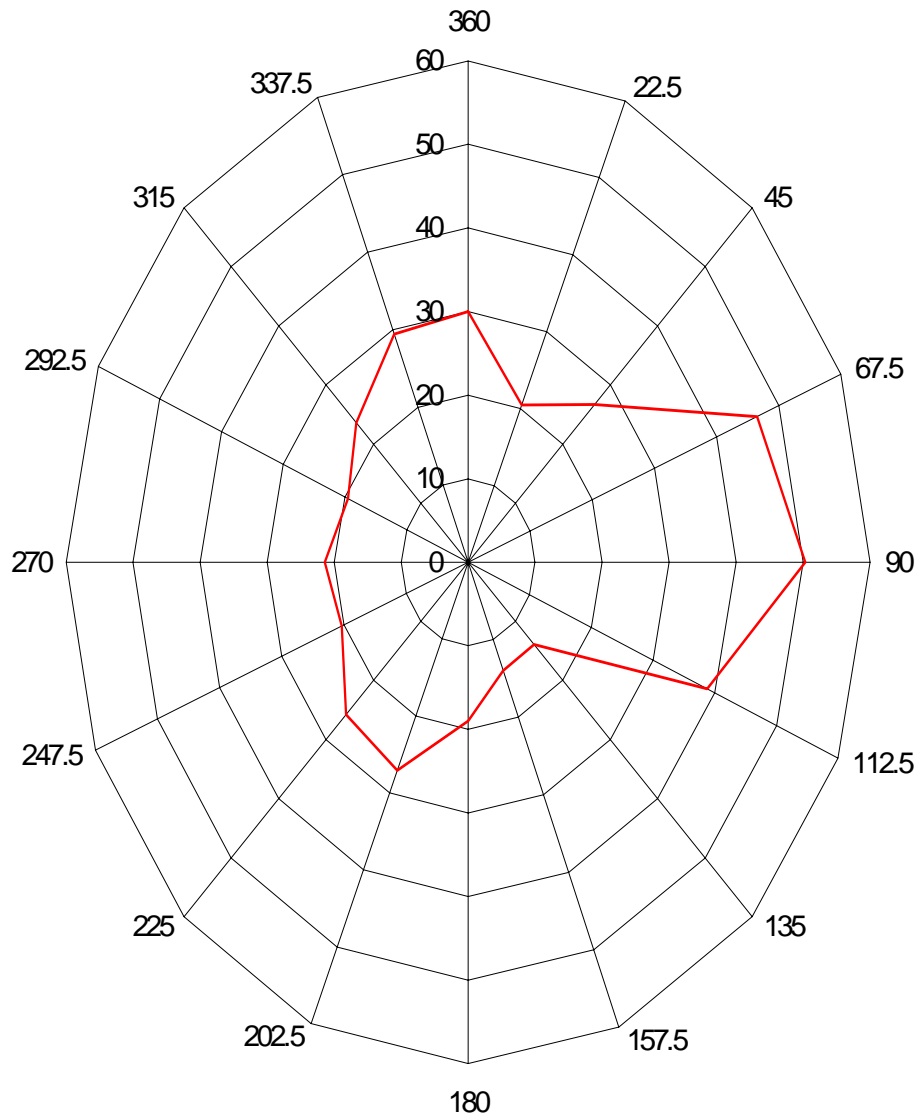
## Percentage Current Direction September 2005



Direction implies the direction in which the current was traveling.

# Traverse Bay Environmental Monitoring Buoy 2005

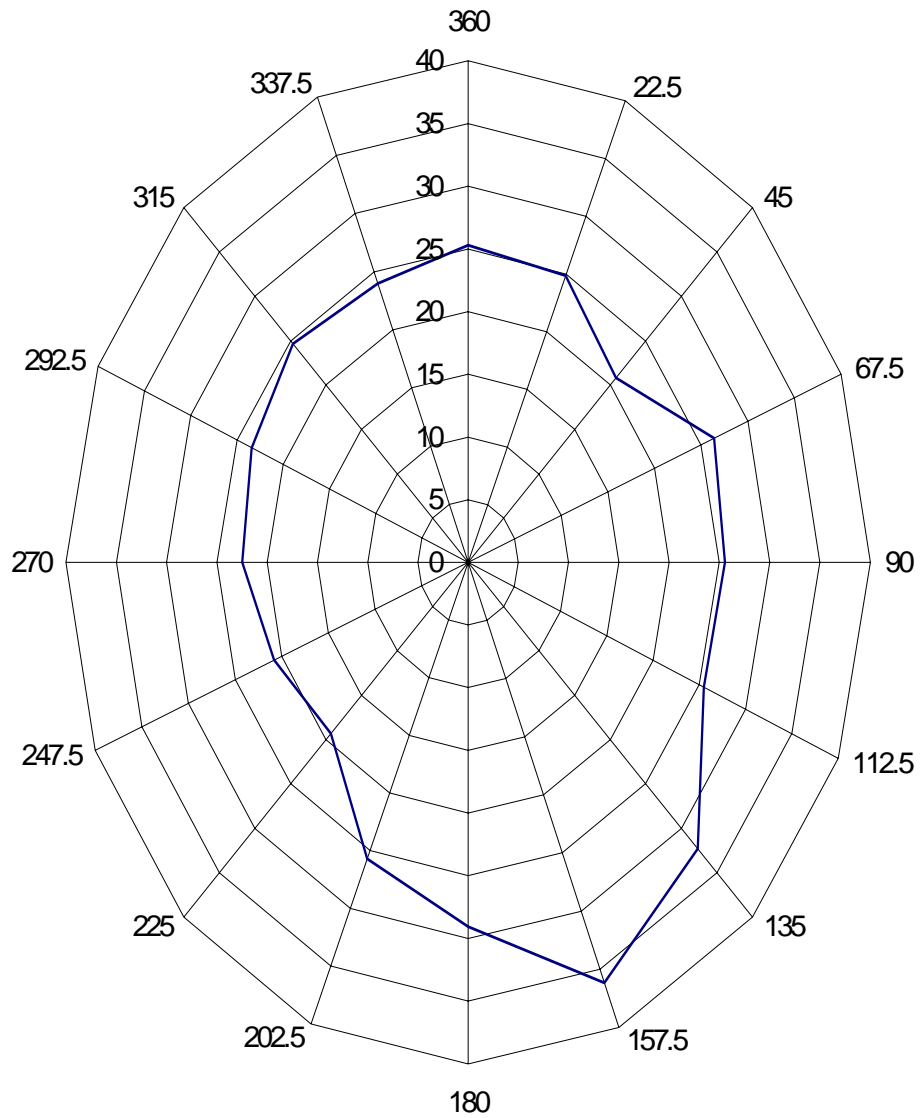
## Percentage Wind Direction October 2005



Direction implies the direction from which the wind originated.

# Traverse Bay Environmental Monitoring Buoy 2005

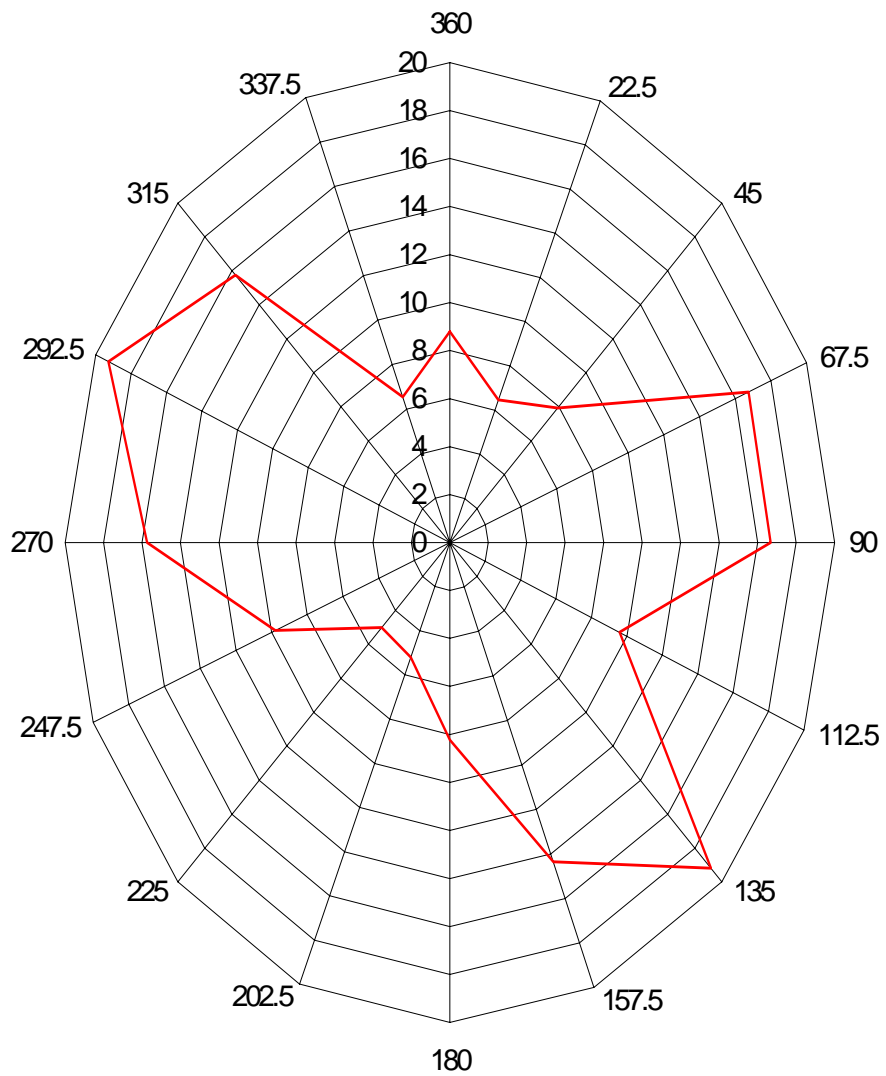
## Percentage Current Direction October 2005



Direction implies the direction in which the current was traveling.

# Traverse Bay Environmental Monitoring Buoy 2005

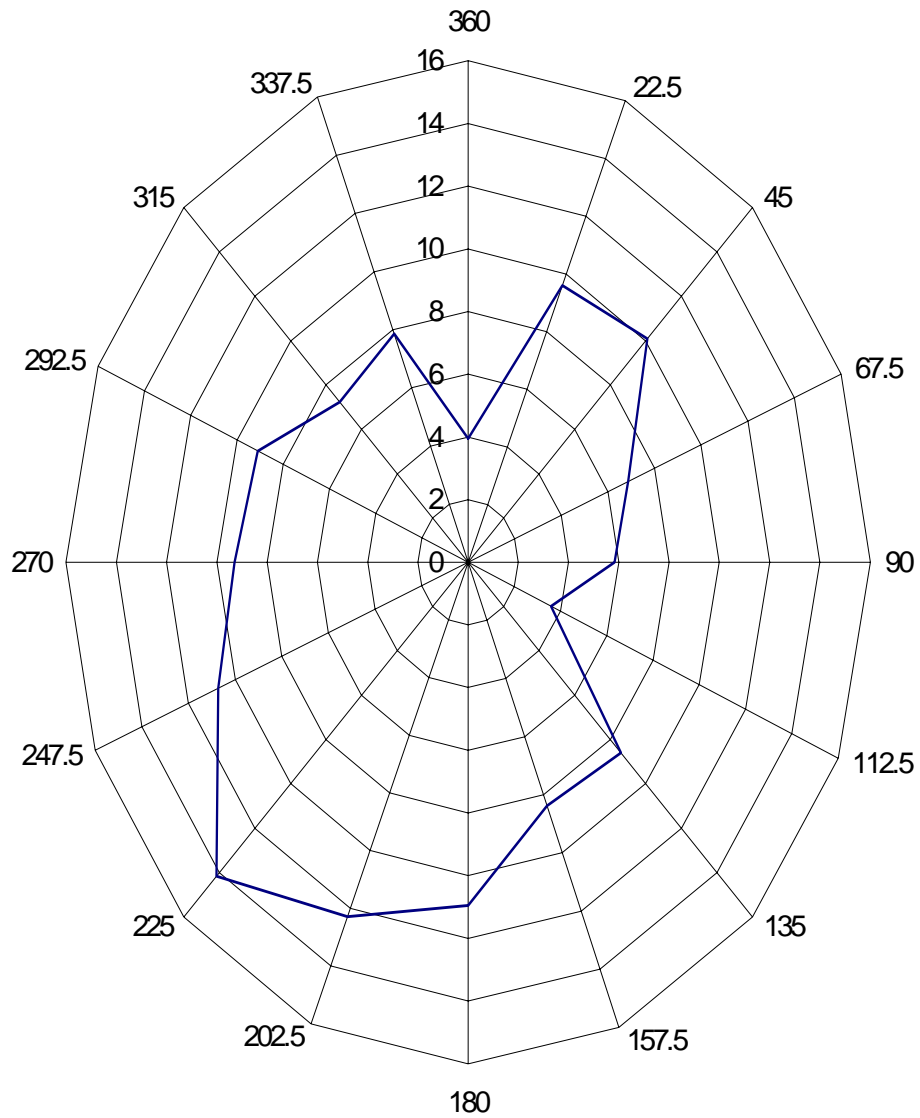
## Percentage Wind Direction November 2005



Direction implies the direction from which the wind originated.

# Traverse Bay Environmental Monitoring Buoy 2005

## Percentage Current Direction November 2005



Direction implies the direction in which the current was traveling.